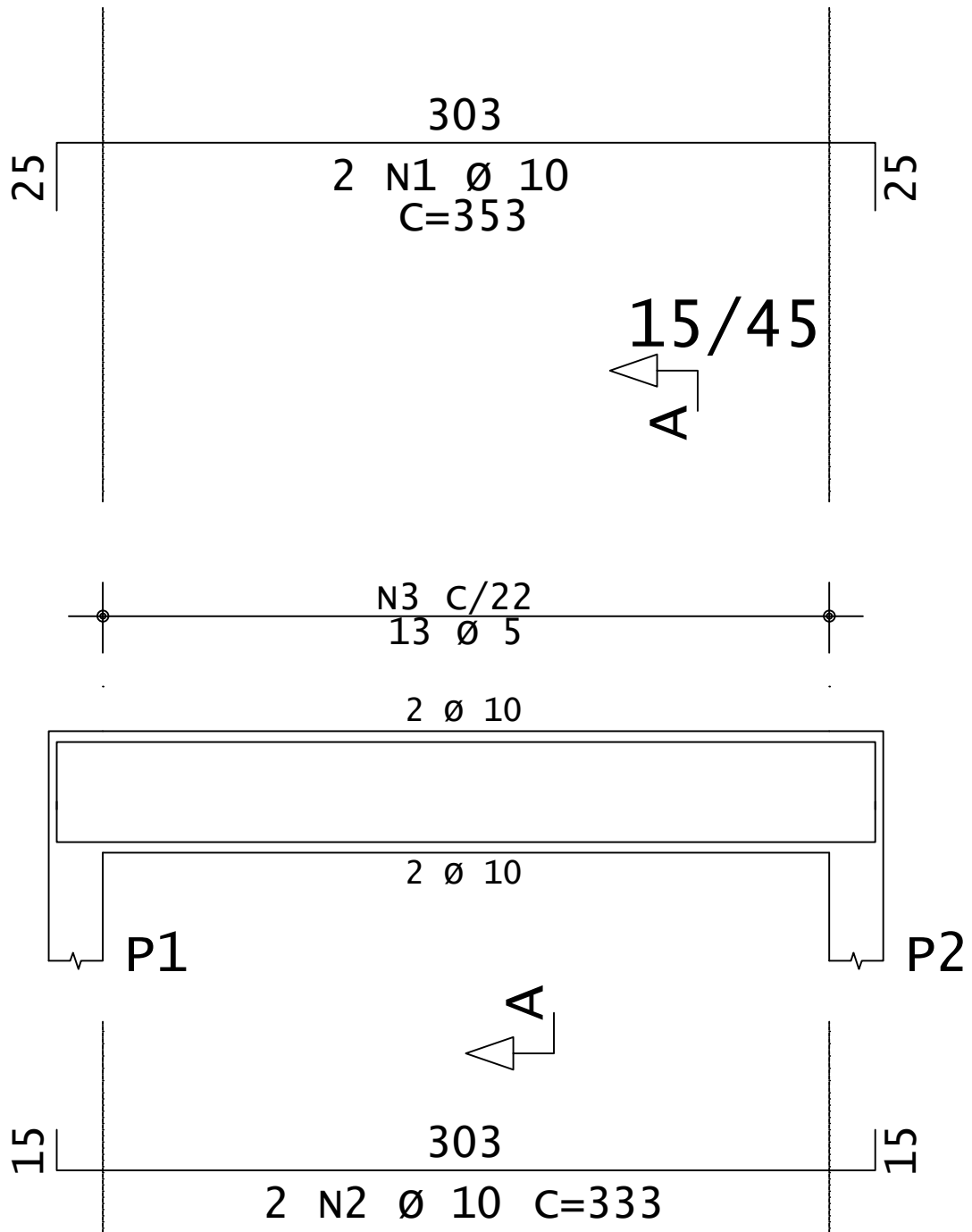
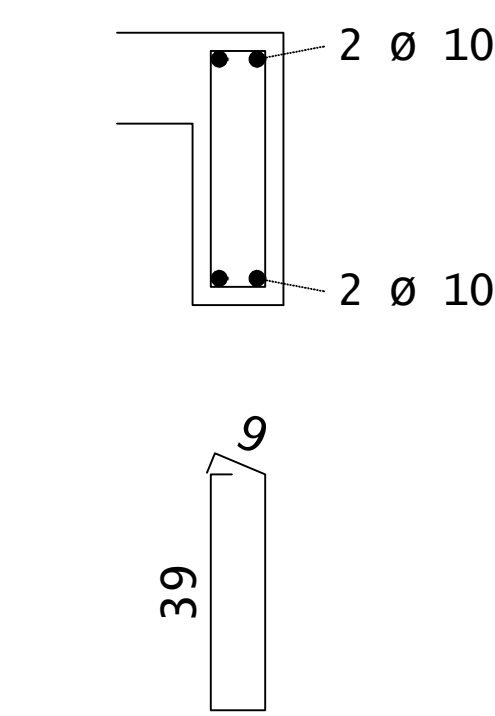


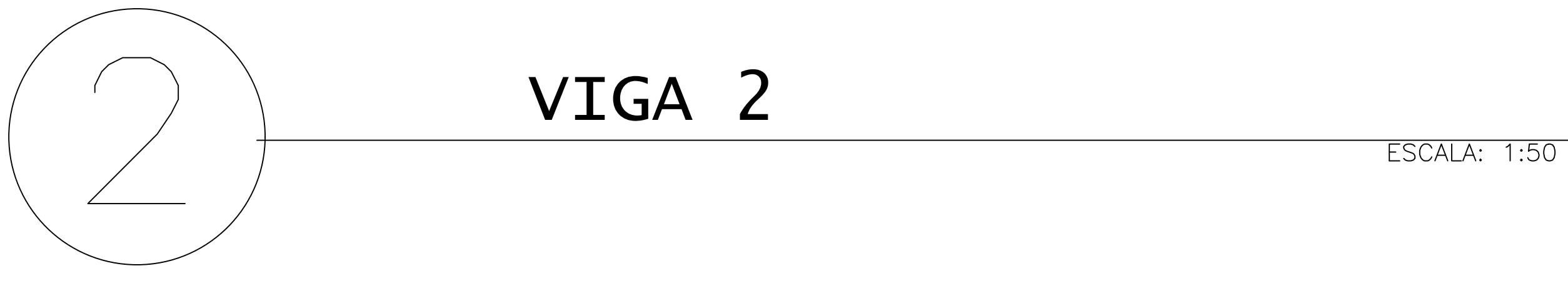
v1



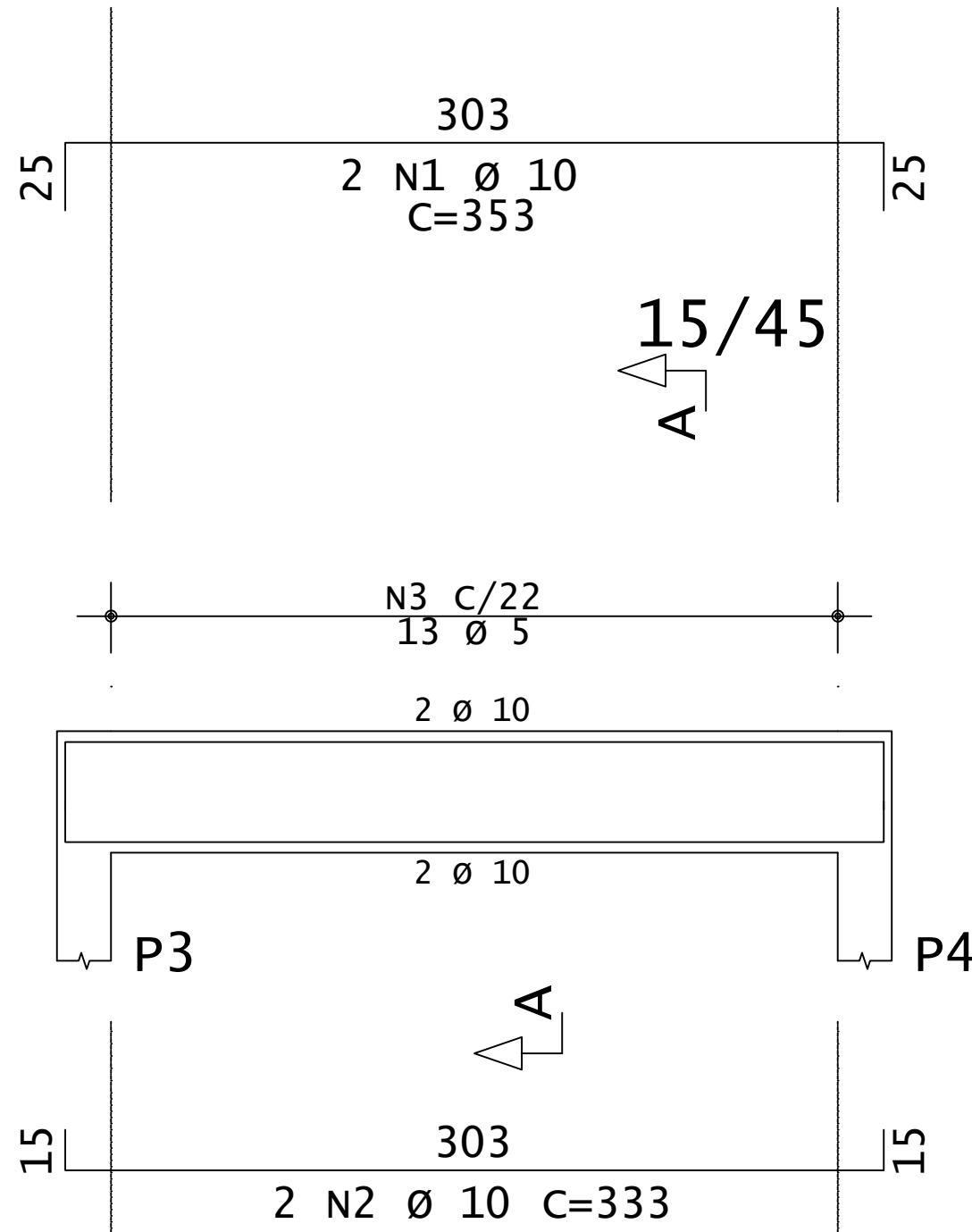
Corte A



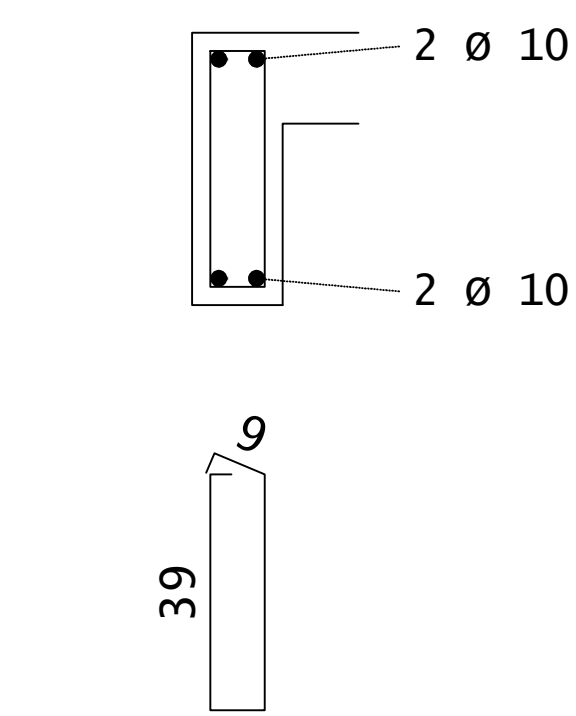
13 N3 Ø 5 C=111



v2

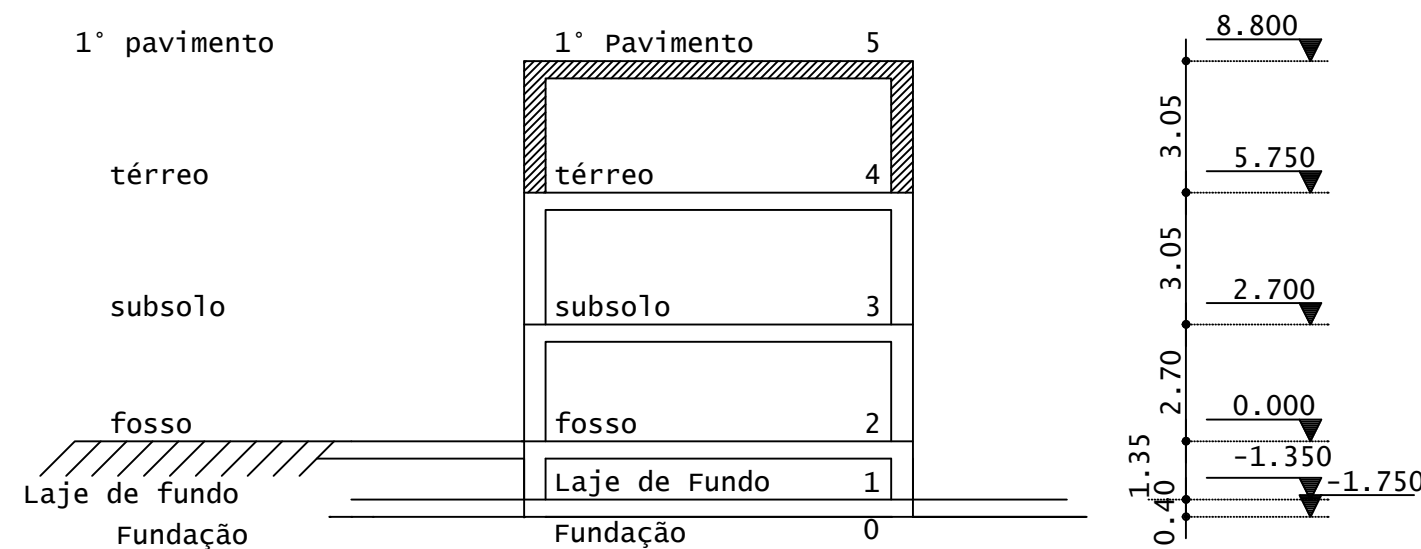


Corte A



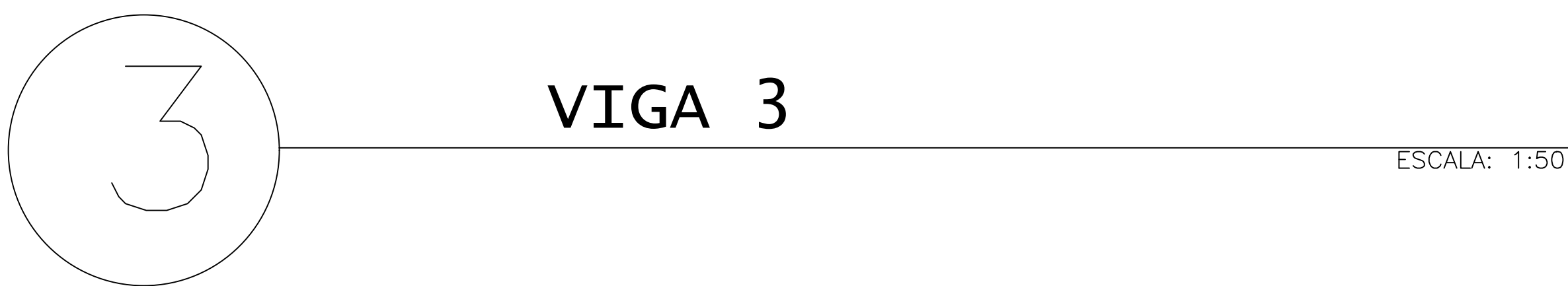
13 N3 Ø 5 C=111

Corte esquemático

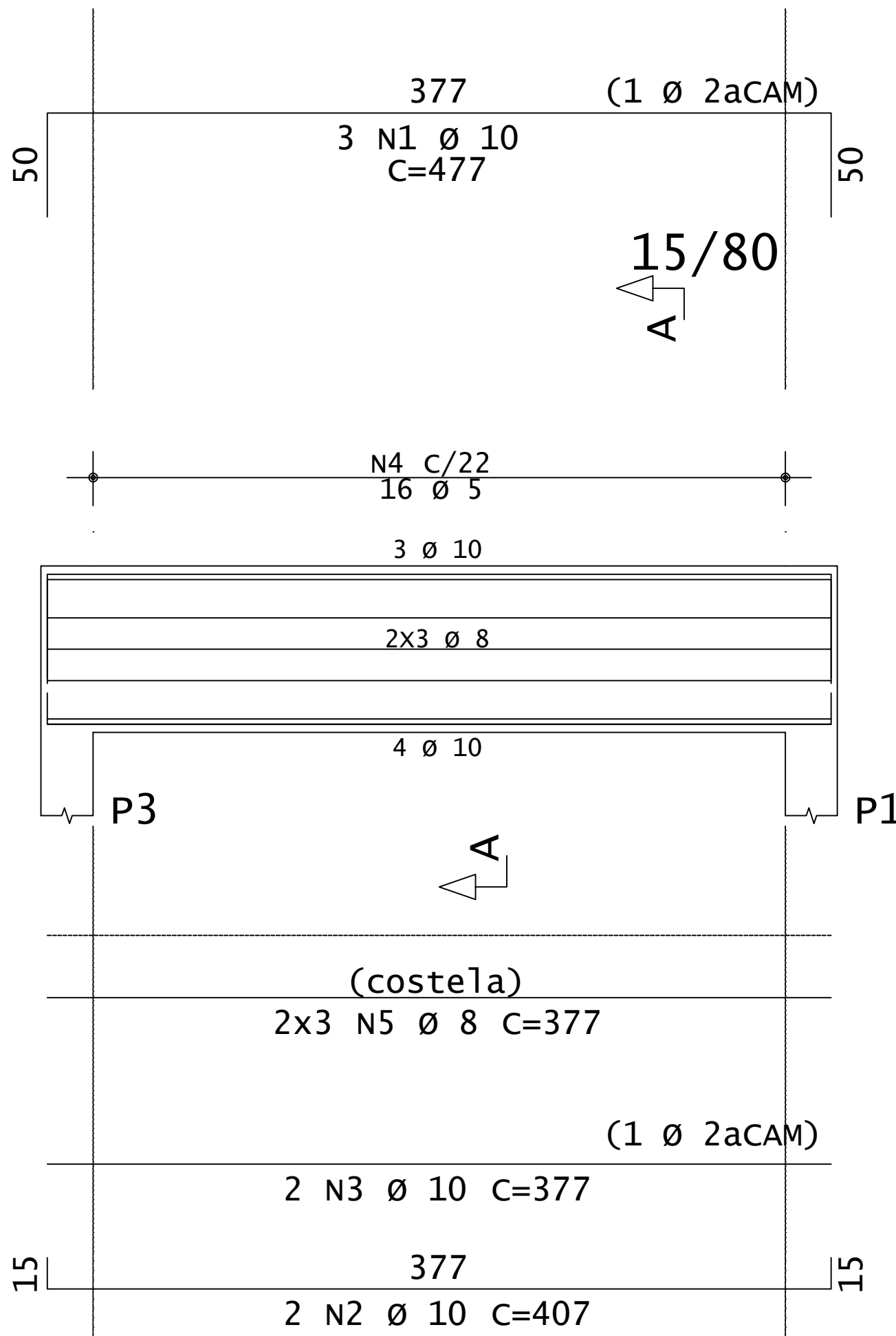


AÇO	POS	BIT (mm)	QUANT	COMPRIMENTO UNIT (cm)	TOTAL (cm)
V1					
50A	1	10	2	353	706
50A	2	10	2	333	666
60A	3	5	13	111	1443
V2					
50A	1	10	2	353	706
50A	2	10	2	333	666
60A	3	5	13	111	1443
V3					
50A	1	10	3	477	1431
50A	2	10	2	407	814
50A	3	10	2	377	754
60A	4	5	16	181	2896
50A	5	8	6	377	2262
V4					
50A	1	16	2	436	872
50A	2	16	2	425	850
60A	3	5	16	101	1616

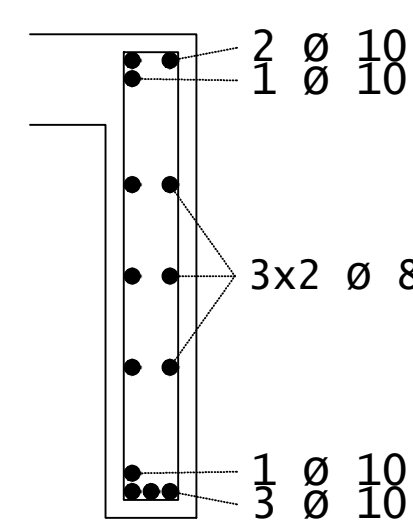
RESUMO DE AÇO				
AÇO	BIT (mm)	COMPR (m)	PESO (kg)	
60A	5	74	11	
50A	8	23	9	
50A	10	57	35	
50A	16	17	27	
Peso Total	60A =		11 kg	
Peso Total	50A =		72 kg	



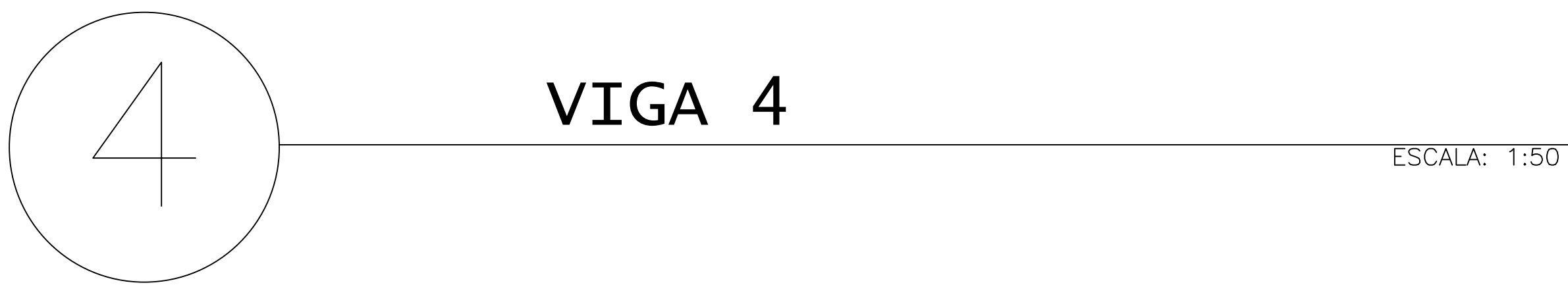
v3



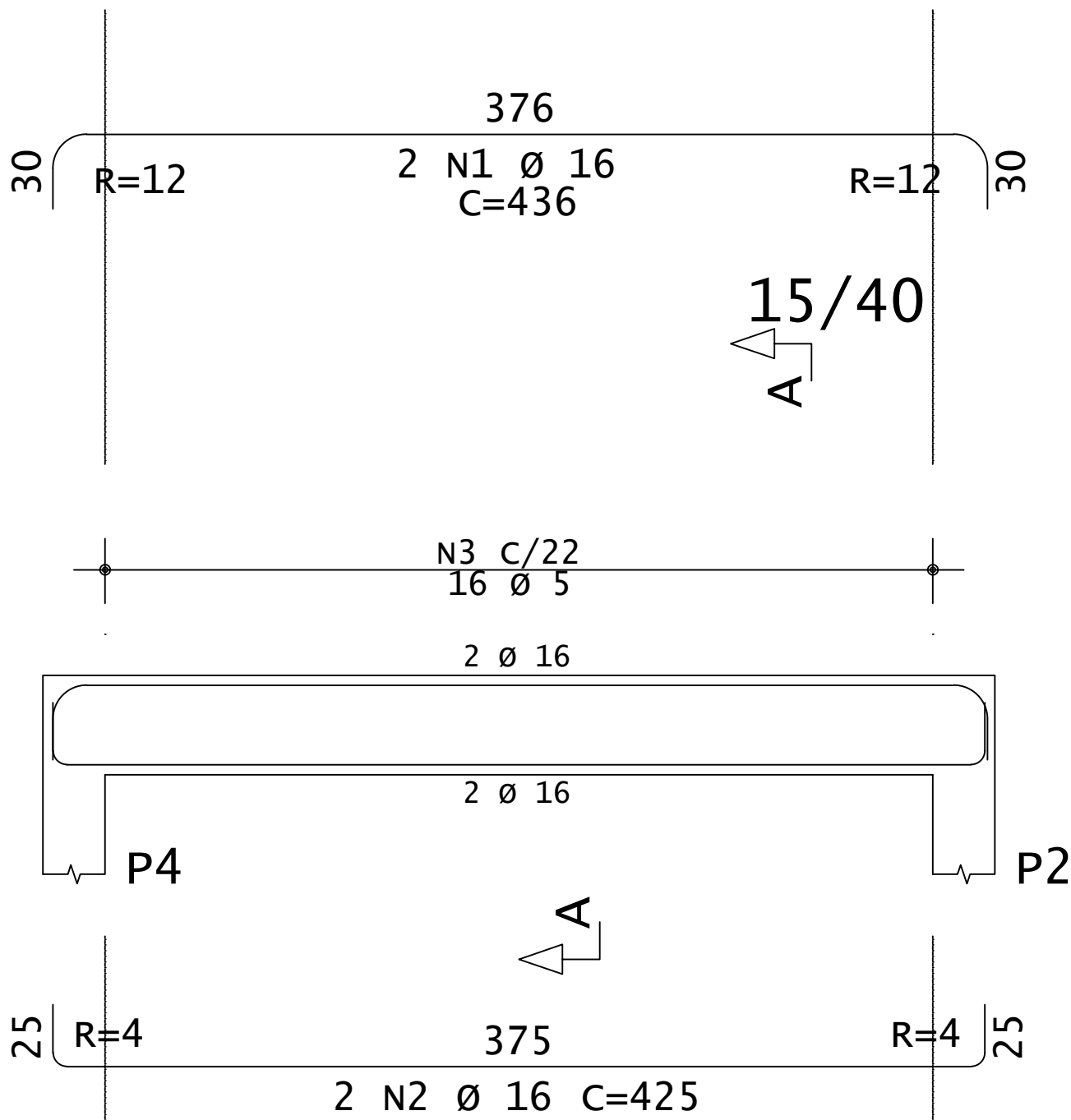
Corte A



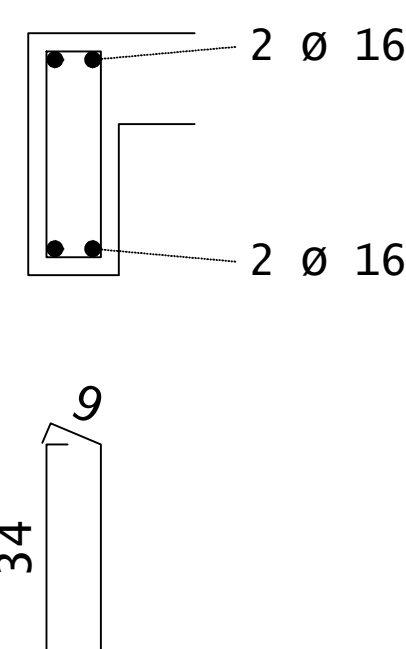
16 N4 Ø 5 C=181



v4



Corte A



16 N3 Ø 5 C=101

Notas			
1- DIMENSÕES EM CENTÍMETROS			
2- DETALHES PODEM ESTAR CONTIDOS NO MEMORIAL			
1	REVISÃO GERAL	12/09/2024	
0	EMISSÃO INICIAL	12/09/2024	
REVISÃO	DESCRIÇÃO	DATA	
VIGAS 1º PAVIMENTO			
fck = 30 MPa CONCRETO ECS = 26.1 GPa			
DATA:	ESCALA:	RESPONSÁVEL TÉCNICO:	CREA:
25/07/2027	1:50	CARLOS DANIEL DO NASCIMENTO RAMALHO	475416924RN
CLIENTE:		DESENHISTAS:	
UNIVERSIDADE FEDERAL RURAL DO SEMI ÁRIDO		FRANCISCO, RAFAEL OLIVEIRA NETO, ADÃO CESÁRIO GOMES NETO, VINÍCIUS DAVINCE FERREIRA DA SILVA, RAYMUNDO GABRIEL SOARES RODRIGUES, JOSÉ RONALDO SOUZA NUNES	
ENDEREÇO:		PRANCHA Nº:	
Av. Francisco Mata, 572 - Bairro Costa e Silva, Mossoró - RN		12	
INFORMAÇÕES ADICIONAIS:		ENDEREÇO:	
ORN: 5.628-900 TELEFONE: +55 (41) 3317-8000 E-MAIL: gomes@momentus.com.br		UFRERS - Campus de Pau dos Ferros São Geraldo Pau dos Ferros - RN 59900-000 Brasil, Pau dos Ferros 59900000, SALA 33-BL PROFESSORES 02.	
COORDENADAS GEOGRÁFICAS: 5°12'37" S 37°49'07" W			