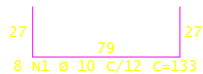
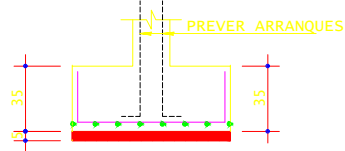
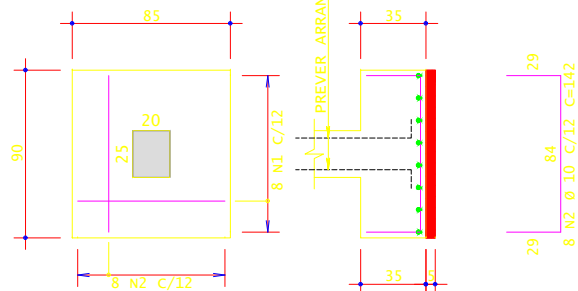
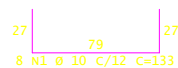
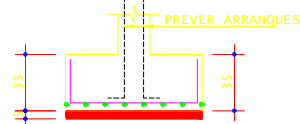
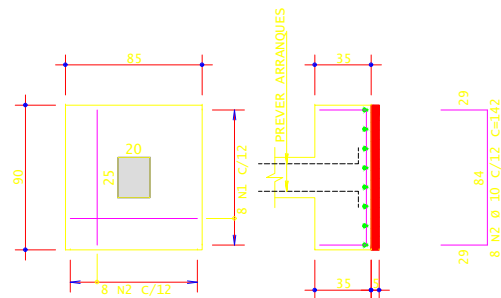


1 SAPATA S1
ESCALA: 1:25



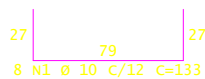
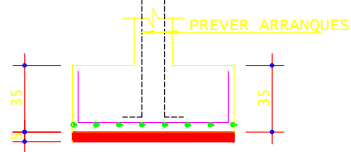
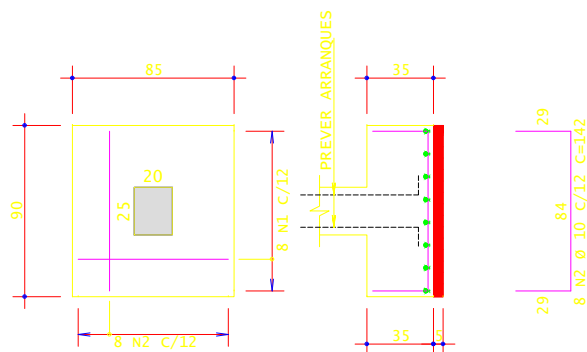
2 SAPATA S2
ESCALA: 1:25



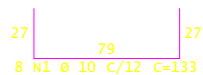
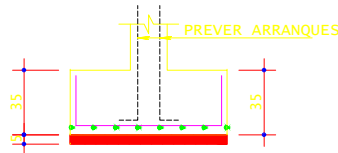
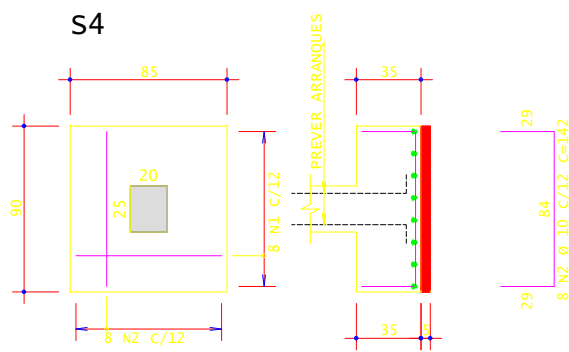
AÇO	POS	BIT (mm)	QUANT	COMPRIMENTO		
				UNIT (cm)	TOTAL (cm)	
S1						
50A	1	10	8	133	1064	
50A	2	10	8	142	1136	
S2						
50A	1	10	8	133	1064	
50A	2	10	8	142	1136	
S3						
50A	1	10	8	133	1064	
50A	2	10	8	142	1136	
S4						
50A	1	10	8	133	1064	
50A	2	10	8	142	1136	

RESUMO DE AÇO			
AÇO	BIT (mm)	COMPR (m)	PESO (kg)
50A	10	88	54
Peso Total		50A =	54 kg

3 SAPATA S3
ESCALA: 1:25



4 SAPATA S4
ESCALA: 1:25



<h2>FUNDAÇÕES</h2> <p>FGS - 50 MPa CONCRETO 603 - 20,1 MPa</p>				<p>MOMENTUS ENGENHARIA & TECNOLOGIA</p>
DATA: 25/07/2027	ESCALA: 1:25	RESPONSÁVEL TÉCNICO: CARLOS DANIEL DO NASCIMENTO RAMALHO	CREA: 475416924/RN	
CLIENTE: UNIVERSIDADE FEDERAL RURAL DO SEMI ARIDO				DESENHISTAS: FRANCISCO RAFAEL OLIVEIRA NETO JOÃO CESÁRIO GOMES NETO VINÍCIUS DAVINCE FERREIRA DA SILVA RAYMUNDO GABRIEL SOARES RODRIGUES JOSÉ RONALDO SOUZA NUNES
ENDEREÇO: Av. Francisco Mota, 572 - Bairro Costa e Silva, Mossoró - RN				<h1>04</h1>
INFORMAÇÕES ADICIONAIS: CEP: 5.625-900 TELEFONE: +55 84 3317-8200 E-MAIL: gabriela@ufersa.edu.br		ENDEREÇO: UFERSA - Campus de Pau dos Ferros São Geraldo Pau Dos Ferros - RN 59900-000 Brasil, Pau dos Ferros 59960000, SALA 33-BL PROFESSORES 02.		
COORDENADAS GEOGRÁFICAS: 0°12'37"S 37°19'09"W				